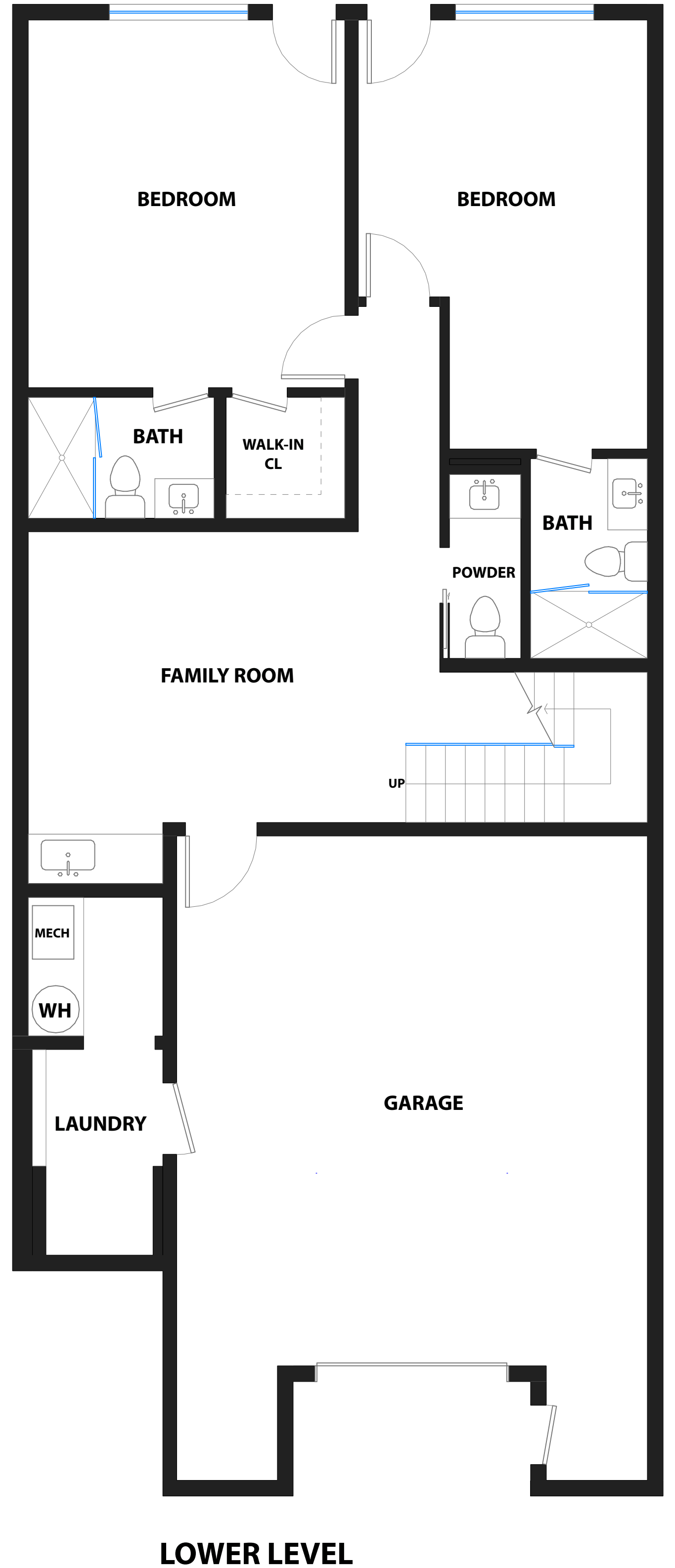
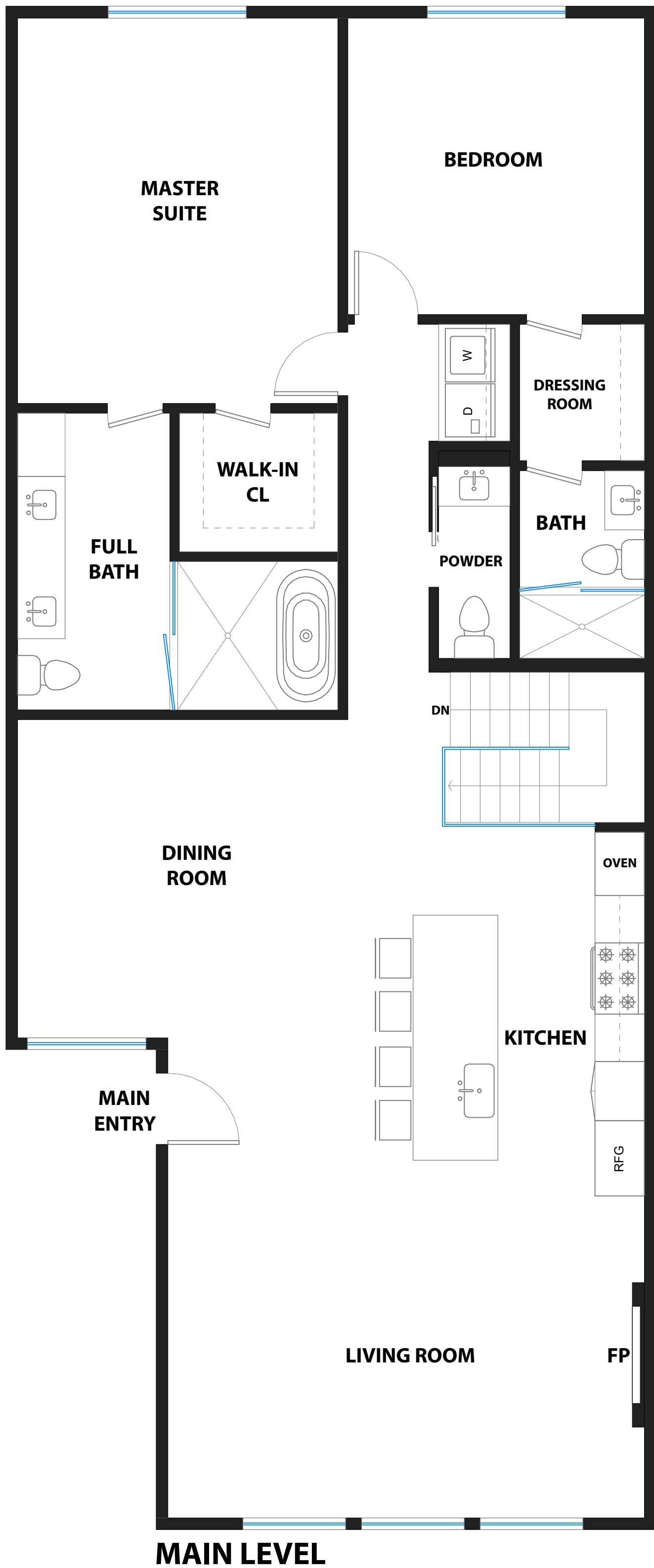


# 849 26TH AVENUE

SAN FRANCISCO, CALIFORNIA



## LOWER LEVEL

### PROPERTY SQF INFORMATION

**LIVING SPACE**  
Square Footage: 2,722 Sq Ft\*

\* Main Level 1,633

\* Lower Level 1,089

**NON-LIVING SPACE**  
Square Footage: 528 Sq Ft\*

\* Garage 528

**APPROXIMATE TOTAL LIVING & NON-LIVING SPACE**  
Square Footage: 3,250 Sq Ft\*